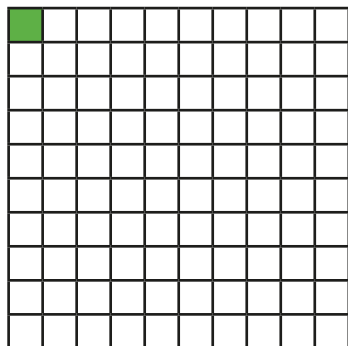


Equivalent fractions, decimals and percentages

1 What fraction, decimal and percentage of each grid is shaded?

a)

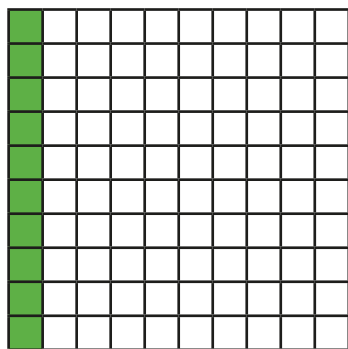


fraction =

decimal =

percentage =

b)

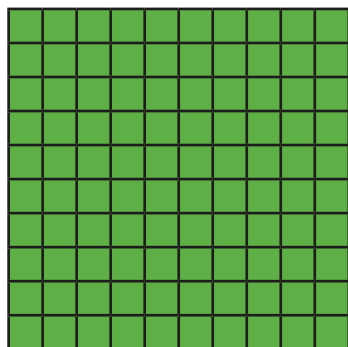


fraction =

decimal =

percentage =

c)



fraction =

decimal =

percentage =

2 Match the equivalent fractions, decimals and percentages.

$$\frac{15}{100}$$

$$0.05$$

$$5\%$$

$$\frac{1}{20}$$

$$0.5$$

$$15\%$$

$$\frac{1}{5}$$

$$0.2$$

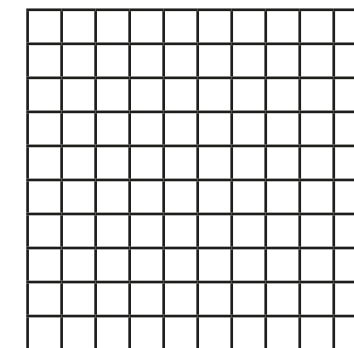
$$50\%$$

$$\frac{1}{2}$$

$$0.15$$

$$20\%$$

3 Here is a hundred square.



a) Shade the hundred square in the given proportions.

- $\frac{3}{10}$ green
- 0.03 red
- 13% blue
- 0.3 yellow

b) What proportion of the hundred square is unshaded?

Write your answer as a fraction, decimal and percentage.

fraction = decimal = percentage =



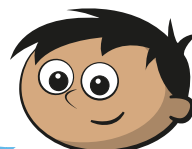
4 Complete the table.

Fraction	Decimal	Percentage
	0.21	
		12%
$\frac{2}{10}$		
	0.4	
	0.44	
		4%
$\frac{3}{4}$		
	0.99	

5 Amir was asked to complete the statement using $<$, $>$ or $=$.

14% $>$ 0.4

14 is greater than 4, so 14% must be greater than 0.4



a) What mistake has Amir made?

b) Write $<$, $>$ or $=$ to complete the statement.

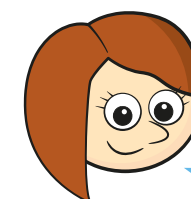
14% \bigcirc 0.4

6 Match the children to the decimal cards.



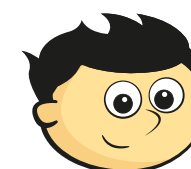
My decimal is $\frac{4}{10}$ less than 100%.

0.65



My decimal cannot be simplified when it is written as a fraction.

0.57



My decimal is 10% less than $\frac{3}{4}$

0.61



My decimal is less than 60%.

0.6

7 Use the digit cards to write a decimal greater than $\frac{1}{5}$ but less than 40%.

You may not use a card more than once in each number.

0	1	2	3	4	5
---	---	---	---	---	---

	.		
--	---	--	--

How many other answers can you find?